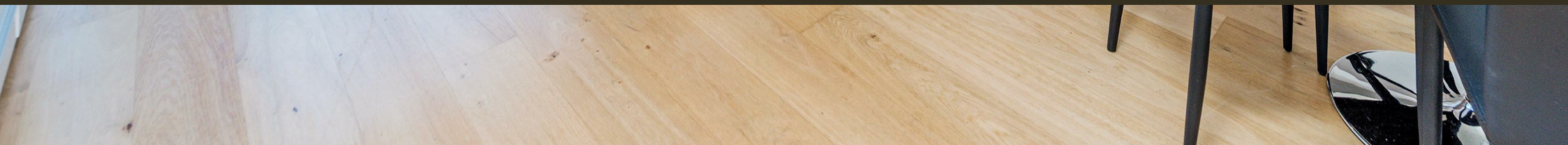




Hepworth Court, 30 Gatliff Road
London SW1W

GARTONJONES.COM



Hepworth Court, 30 Gatliff Road London, SW1W

£825 Per Week

GARTON JONES.COM

8 Gatliff Road
Grosvenor
Waterside
Chelsea
London
SW1W 8DP

Lettings:
+44 (0) 20 7730 5007
gws@gartonjones.com
www.gartonjones.com

A bright and spacious ONE DOUBLE BEDROOM apartment to rent of approx. 688sq.ft (64sq.m), in Hepworth Court, Grosvenor Waterside, overlooking the docks and close to the River Thames by Chelsea Bridge. This FURNISHED apartment benefits from a dual aspect open plan reception/kitchen with BALCONY. The kitchen has integrated appliances and there is a large LUXURY BATHROOM with FREE STANDING BATHE & SEPERATE SHOWER CUBICLE. Additionally there is wood flooring, comfort cooling, good storage including a utility cupboard housing a washer dryer and FITTED WARDROBES in the bedroom. UNDERGROUND PARKING.

Residents have the use of 24-HOUR CONCIERGE, GYM & SPA. On-site Sainsbury's Local, coffee shop and private kids club. SLOANE SQUARE & VICTORIA station with Gatwick Express are within walking distance. Additional amenities including shops, restaurants and the excellent transport links of both Sloane Square and Victoria Station with Gatwick express are within walking distance. Also within easy access to the open green spaces of Battersea Park and Battersea Power Station development, King's Road and designer boutiques on Sloane Street.

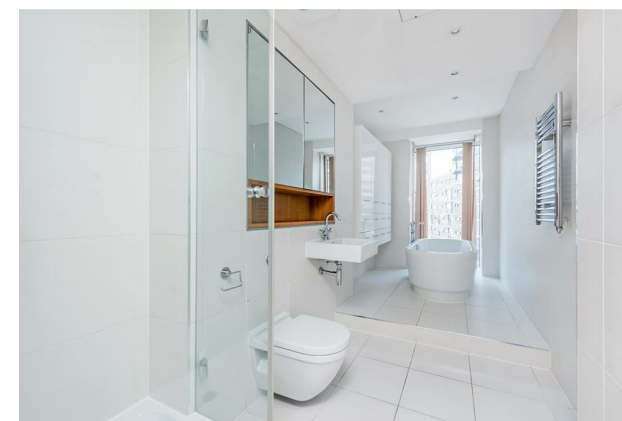
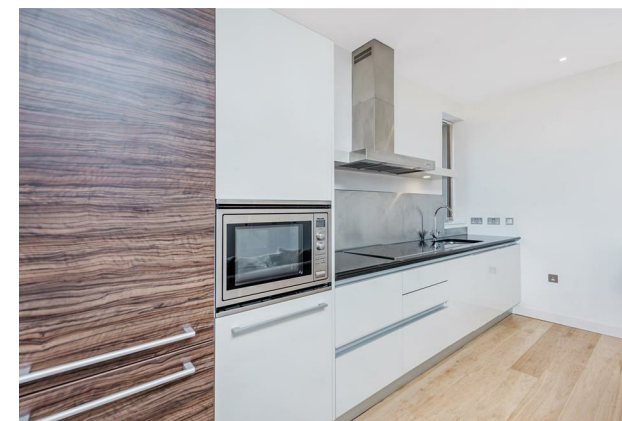
Available via Garton Jones on-site office at Grosvenor Waterside (underneath Bramah House).

*Please note furniture may differ to that shown in the current photos

Westminster City Council (band E)
12 months min terms 5 Weeks deposit required
EPC (C)

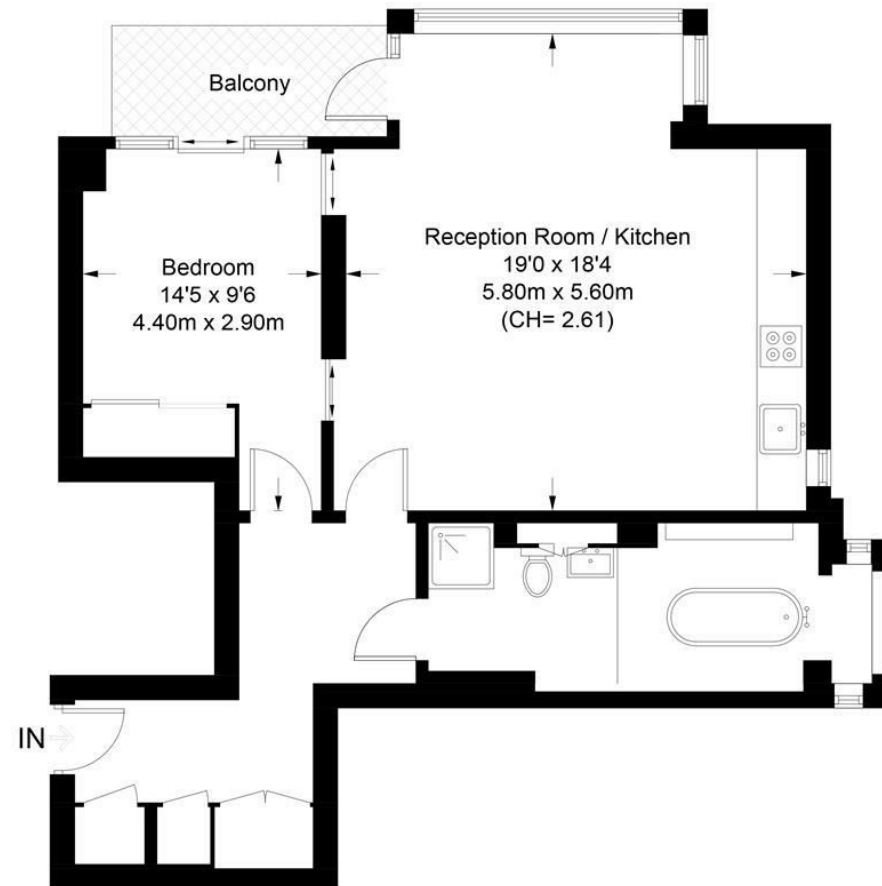
To check broadband and mobile phone coverage, please visit
Ofcom: ofcom.org.uk/phones-telecoms-and-internet/advice-for-consumers/advice/ofcom-checker

- 688sq.ft (64sq.m)
- 1 Double Bedroom
- Luxury Bathroom Suite with Separate Shower
- Dual Aspect Open Plan Reception Room
- Kitchen with Miele Integrated Appliances
- Balcony
- 24 Hour Concierge
- Residents Leisure Suite with Gym & Spa Facilities
- On-Site Sainsbury's, Coffee Shop & Bakery, Purple Dragon Private Kids Club & Crèche
- Walking Distance to Sloane Square and Victoria Station



Hepworth Court

Approximate Gross Internal Area = 688 sq ft / 64 sq m



Fifth Floor

Not to scale, for guidance only and must not be relied upon as a statement of fact.
All measurements and areas are approximate only and have been prepared in
accordance with the current edition of the RICS Code of Measuring Practice.

